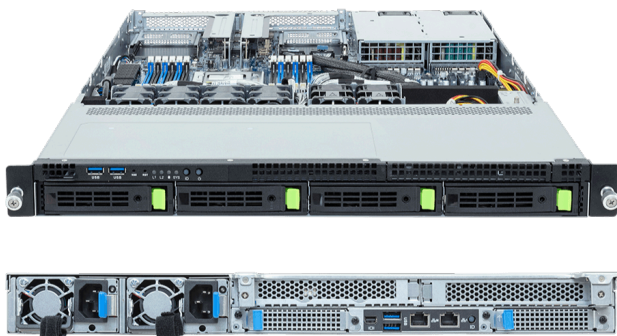


R143-E30-AAB1

Rack Server - AMD EPYC™ 8005/8004 Server Processors - 1U UP 4-Bay Gen5 NVMe/SATA/SAS-4 Platinum PSU



Key Features

- Single AMD EPYC™ 8005/8004 Server Processors
- 6-Channel DDR5 RDIMM per CPU with 12 x DIMMs
- 1 x 1 Gb/s LAN port via Intel® I210-AT
- 4 x 3.5"/2.5" Gen5 NVMe/SATA/SAS-4 hot-swap bays
- 1 x M.2 slot with PCIe Gen3 x4
- 2 x FHHL PCIe x16 slots with Gen5 x16 lanes
- 2 x OCP NIC 3.0 PCIe Gen5 x16 slots
- 1+1 800 W 80 PLUS Platinum redundant power supplies

Applications

Networks Server, Servers for Hybrid/Private Cloud...

Specification

Dimensions	1U (W438 x H43.5 x D710 mm)	I/O Ports	Front: 2 x USB 3.2 Gen1 Rear: 2 x USB 3.2 Gen1, 1 x Mini-DP, 1 x RJ45, 1 x MLAN
Motherboard	ME33-DC0	Backplane Board	PCIe Gen5 x4 or SATA 6 Gb/s or SAS-4 24 Gb/s
CPU	AMD EPYC™ 8005 Server Processors AMD EPYC™ 8004 Server Processors Single processor, cTDP up to 225 W	TPM	1 x TPM header (SPI), Optional TPM 2.0 kit: CTM010
OS Compatibility	OS Support List	Power Supply	1+1 800 W 80 PLUS Platinum redundant power supplies AC Input: 100-240 V
Socket	1 x LGA 4844 (Socket SP6)	System Management	ASPEED® AST2600 Baseboard Management Controller GIGABYTE Management Console web interface
Chipset	System on Chip	System Fans	2 x 40x40x28mm 4 x 40x40x56mm
Memory	6-Channel DDR5 RDIMM, 12 x DIMMs [EPYC 8005] Up to 6400 MT/s (1DPC), 5200 MT/s (2DPC) [EPYC 8004] Up to 4800 MT/s (1DPC), 3600 MT/s (2DPC)	Operating Properties	Operating: 10°C to 35°C, 8% to 80% (non-condensing) Non-operating: -40°C to 60°C, 20% to 95% (non-condensing)
LAN	1 x 1 Gb/s LAN (1 x Intel® I210-AT), Supports NCSI function 1 x 10/100/1000 Mb/s Management LAN	Packaging Content	1 x R143-E30-AAB1 1 x CPU heatsink 1 x Mini-DP to D-Sub cable 1 x 2-Section Rail kit
Video	Integrated in ASPEED® AST2600 - 1 x Mini-DP	Ordering Part Numbers	6NR143E30DR000AAB1*
Storage	Front hot-swap: 4 x 3.5"/2.5" Gen5 NVMe/SATA/SAS-4 [1] Internal M.2: 1 x M.2 (2280/22110), PCIe Gen3 x4 [1] SAS card is required to support SAS drives.	Optional Parts	- 3-Section Rail kit (Supports CMA): 25HB2-A56120-K0R - Cable Management Arm: 25HBZ-R18100-K0R
RAID	Require RAID add-in cards		
PCIe Expansion Slots	2 x FHHL x16 (Gen5 x16) 2 x OCP NIC 3.0 (Gen5 x16), Support NCSI		



Learn more at: <https://www.gigabyte.com/Enterprise>

* All specifications are subject to change without notice. Please visit our website for the latest information.

* All trademarks and logos are the properties of their respective holders.

© 2026 Giga Computing Technology Co., Ltd. All rights reserved.

Last updated: May 19, 2026

Designed by

